

# INOX 90

Mobile lifter for the pharmaceutical and food industry.

For live applications:

[www.youtube.com/HOVMANDIMPACT](http://www.youtube.com/HOVMANDIMPACT)

100%  
Stainless  
steel

90 kg



IP66

360°

Mobile, easy to manoeuvre and extremely space-saving.

CE



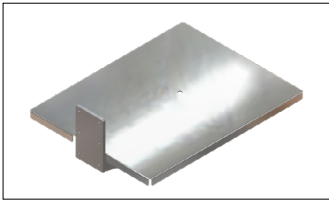
**For use in demanding environments.** The INOX 90 is your perfect aid in sensitive work areas that have rigorous standards in terms of hygiene and the cleaning of production equipment (IP 66). With a total weight capacity of up to 90 kg, this stainless steel lifter reliably lifts, moves and transports goods from A to B in your containers. The lifter has electropolished surfaces and can be operated at two speeds via a remote control. It features overload protection, a safety clutch, shielding for all moving parts and a battery indicator. The three different mast heights can be combined with two different leg sets and a variety of stainless steel lifting tools.

## TECHNICAL SPECIFICATIONS:

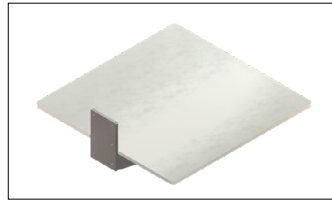
Lift column type	Lifting capacity kg	Stroke length mm	Overall height mm	Lifting speed mm/sec	Battery voltage V/Ah	Total weight kg
<b>90 S</b>	90	956	1225	200/100	24/9	37*
<b>90 L</b>	90	1245	1520	200/100	24/9	40*
<b>90 M</b>	90	1651	1992	200/100	24/9	43*

\* varies depending on chassis and lifting equipment

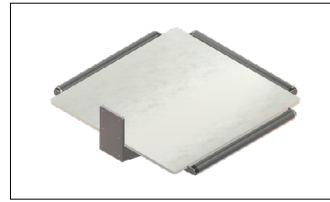
**LIFTING TOOLS FOR CRATES AND BOXES**



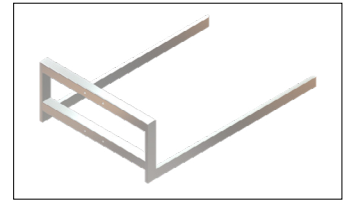
STAINLESS STEEL PLATFORM



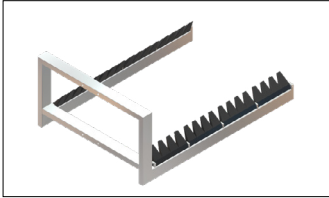
PEHD PLATFORM



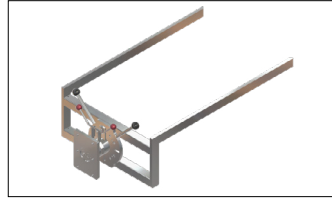
PEHD PLATFORM WITH ROLLERS



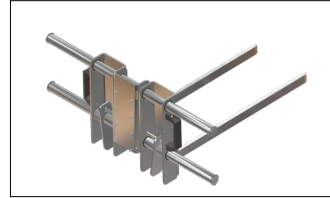
FORK



KLT FORK

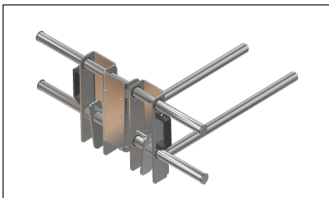


TURNING FORK

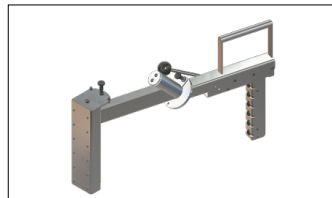


FLEX FORK

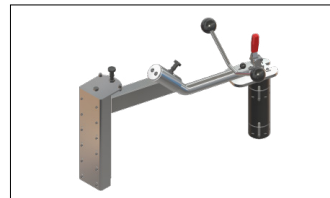
**LIFTING TOOLS FOR REELS**



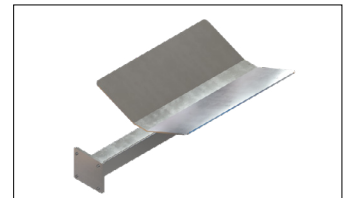
FLEX DOUBLE BOOM



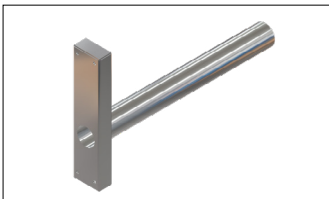
MANUAL REEL  
MANIPULATOR MRP2



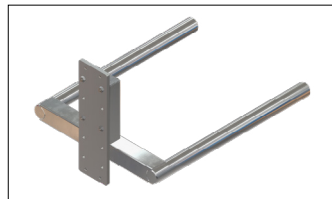
MANUAL REEL  
MANIPULATOR MRP3



BOOM + V-BLOCK



BOOM

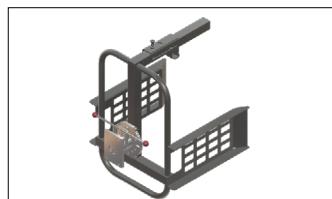


DOUBLE BOOM

**LIFTING TOOLS FÜR BUCKETS AND JERRYCANS**



CANISTER TIPPER SMALL



CANISTER TIPPER LARGE



CRANE ARM

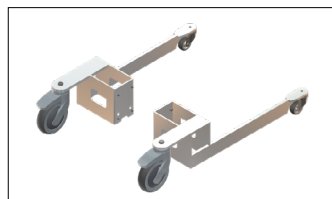


CRANE ARM TRAVERSE  
WITH STRAPS

**LEG SETS**



ANGLED  
Rear wheel with brake  
Leg length: 500 mm



BOX  
Rear wheel with brake  
Leg length: 650 mm