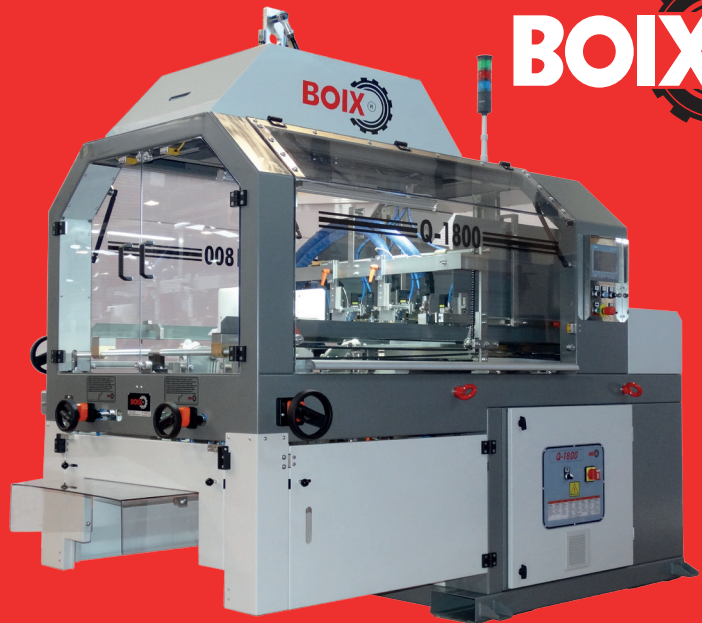


# Q-1800

Box Former  
Plafarm® and C-1



## MACHINE DESCRIPTION

Boix Maquinaria has developed the Q1800 machine to reach the customers that need a compact machine, with high speed.

Q1800 design combines high output and an easy operation, offering: easy access, high production until 1.800 boxes per hour, quick change using no tools.



## MAIN CHARACTERISTIC

➤ 3 versions:

- Plafarm machine with former working in servo mode.
- C-1 machine with former working in servo mode.
- C-1 machine with former actioned by a pneumatical cylinder.

➤ Pusher actioned by ELGA:

- 2 blocks of constant speed from 1 to 4 and from 5 to 8.

➤ Feeder with venturi system to take the blanks.

➤ Quick box change for boxes of the same base and different height.

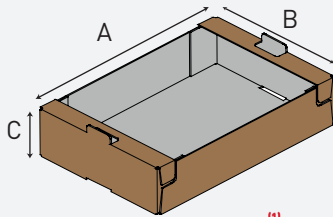
➤ Easy access.

# TECHNICAL SPECIFICATIONS

	Q-1800	Q-1800/N
<b>OPERATION</b>	Mechanical, Electrical and Pneumatic	
<b>GLUE SYSTEM</b>	Hot melt glue injection (Nordson or Melton)	
<b>BOX DESIGN</b>	Plaform y C-1	C-1
<b>ESTIMATED PRODUCTION</b>	400 to 1.800 boxes/hour (8 speeds)	
<b>TOTAL POWER</b>	6,5 Kw (W/O compressor)	5 Kw (W/O compressor)
<b>NETT WEIGHT</b>	1.170 Kg	1.040 Kg
<b>ELECTRICAL SUPPLY</b>	380/220 V (3F+N+T) - 50/60 Hz	
<b>CHANGE OF SIZE</b>	5 min. (1 min. same base and different height)	
<b>WORKING AIR PRESSURE</b>	7 BAR	
<b>AIR CONSUMPTION</b>	300 liters/minute (depending on the box).	950 liters/minute (depending on the box).
<b>FRAME</b>	4 mm steel plate	
<b>MACHINE DIMENSIONS</b>	L: 2.675 mm. W: 1.585 mm. H: 2.170 mm	L: 2.675 mm. W: 1.510 mm. H: 2.355 mm

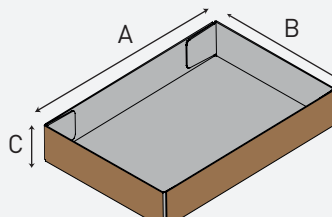
## BOX DIMENSIONS

**PLAFORM®**



**MAX.** 480 x 310 x 250 mm.  
**MIN.** 190 x 130 x 65 mm.

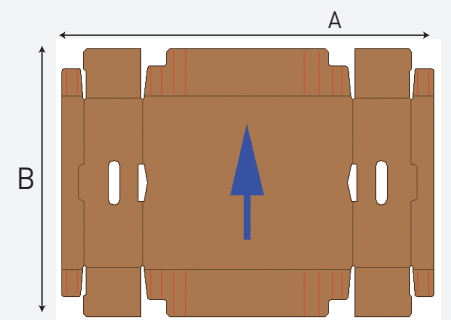
**C-1**



**MAX.** 700 x 500 x 300 mm.  
**MIN.** 130 x 100 x 60 mm.

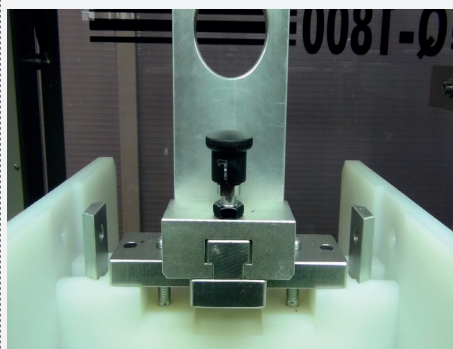
<sup>(1)</sup> Height and base dimensions will depend on the blank dimension.

## BLANK DIMENSIONS



**MAX.** 900 x 800 mm.  
**MIN.** 220 x 220 mm.

## MACHINE DETAILS



### BOIX MAQUINARIA

Polígono Industrial La Granadina  
 C/ Dinamarca s/n (Fase 1)  
 03349 San Isidro (Alicante) España  
 Tel.: (+34) 966 06 01 00  
 sales@boix.com

Maquinaria Boix  
 México S.A. de C.V.  
 Av. Oleoducto nº 201  
 Nave L, Col. Cd. Industrial  
 37490 - León, Gto. México  
 Telf.: +52 477 170 0000  
 Fax.: +52 477 170 0009  
 ventas@boix.mx

Boix Chile S.A.  
 El Roble 375, Bodega J  
 Loteo ind. Valle Grande  
 Lampa-Santiago-Chile  
 Telf.: +56 (2) 2361 26 00  
 Fax: +56 (2) 2331 26 11  
 ventas@boix.cl

Boix Machinery  
 U.S.A. L.L.C.  
 12 Greenway Plaza  
 Suite 1100  
 Houston, Texas  
 77046 (USA)  
 Tel: (713) 491 2820  
 sales@boix.us

Boix Europe B.V.  
 Loubergweg 6  
 6961 EK Eerbeek  
 The Netherlands  
 Telf.: +31 (0) 313 670 460  
 info@boixeuropa.com

Boix Asia.  
 A6-5 Weiting Venture  
 Ind. Workshop No. 9  
 Weixin Road.  
 Suzhou Ind. Park  
 Suzhou (Jiangsu) China  
 Telf.: (+86) 512 69833800  
 sales@boixasia.com

Sprzedaż i serwis techniczny:

**BOSKY**  
 ul. ks. P. Ściegiennego 262 Y  
 25-116 Kielce, Poland  
 + 48 41 334 04 44  
 info@bosky.pl